



**KINGDOM OF CAMBODIA
NATION RELIGION KING**



TOURISM STATISTICAL REPORT

2008

MINISTRY OF TOURISM

Statistics and Tourism Information Department

No. 63, Street 348, Sangkat Toul Svay Prey II, Phnom Penh, Kingdom of Cambodia.

Tel.: +855 23 211593 / Fax: +855 23 212837

Email: info@mot.gov.kh

Website: www.mot.gov.kh

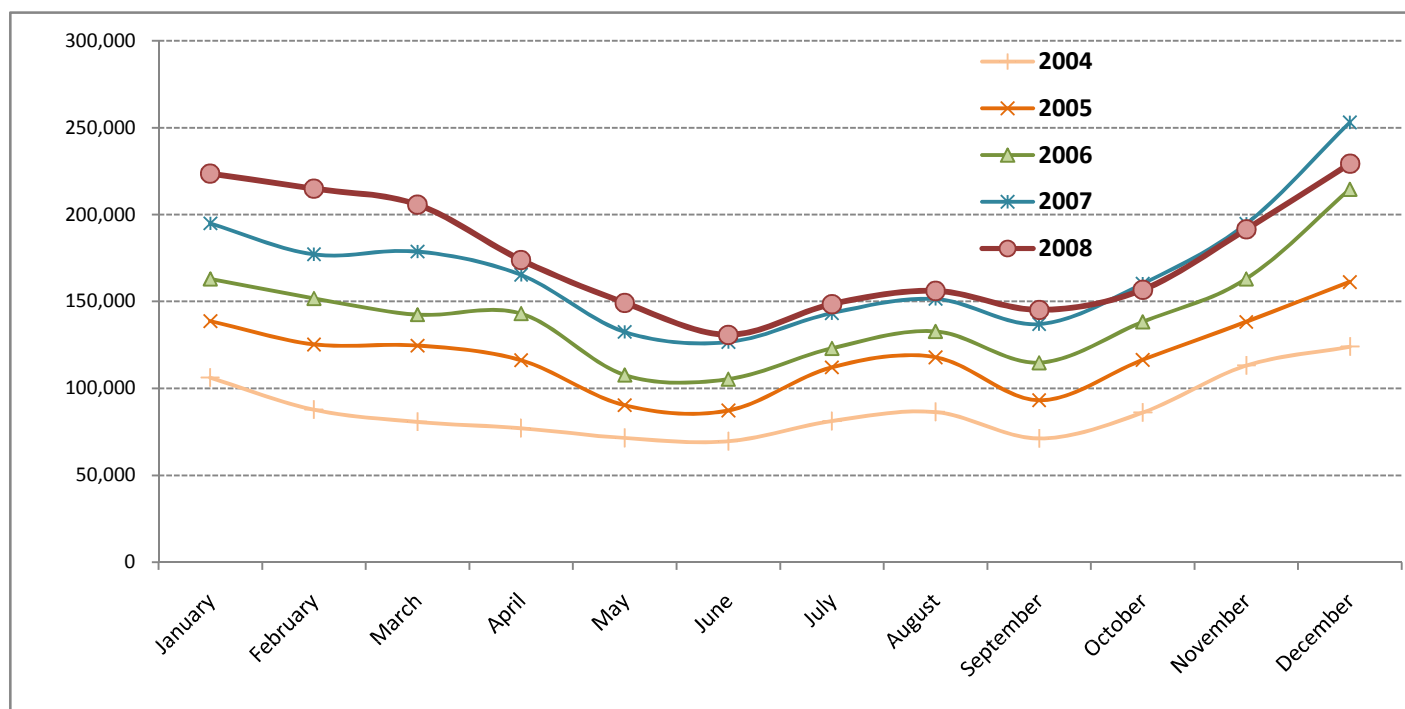
Tourism Highlights

Visitor Arrivals, Average Length of Stay, Hotels Occupancy and Tourism Receipts 1993 - 2008

Years	Visitor Arrivals		Average Length of Stay (days)	Hotels Occupancy (%)	Tourism Receipts (million US\$)
	number	change (%)			
1993	118,183	0.00	N/A	N/A	N/A
1994	176,617	49.44%	N/A	N/A	N/A
1995	219,680	24.38%	8.00	37.00	100
1996	260,489	18.58%	7.50	40.00	118
1997	218,843	-15.99%	6.40	30.00	103
1998	289,524	32.30%	5.20	40.00	166
1999	367,743	27.02%	5.50	44.00	190
2000	466,365	26.82%	5.50	45.00	228
2001	604,919	29.71%	5.50	48.00	304
2002	786,524	30.02%	5.80	50.00	379
2003	701,014	-10.87%	5.50	50.00	347
2004	1,055,202	50.53%	6.30	52.00	578
2005	1,421,615	34.72%	6.30	52.00	832
2006	1,700,041	19.59%	6.50	54.79	1,049
2007	2,015,128	18.53%	6.50	54.79	1,400
2008	2,125,465	5.48%	6.65	62.68	1,595

International visitor arrivals to Cambodia

Destination	Months	2004	2005	2006	2007	2008	change(%) 2008*/07
Cambodia	January	106,200	138,718	163,047	194,932	223,581	14.70%
<i>(all means of transportation, include same-day visitors)</i>	February	87,795	125,326	151,821	177,130	214,902	21.32%
	March	80,765	124,626	142,437	178,751	205,722	15.09%
	April	77,105	116,219	143,069	165,347	173,903	5.17%
	May	71,486	90,314	107,720	132,512	149,275	12.65%
	June	69,595	87,228	105,298	126,677	130,853	3.30%
	July	81,223	112,116	123,047	143,310	148,449	3.59%
	August	86,450	117,943	132,792	151,478	156,098	3.05%
	September	71,209	93,158	114,781	137,027	145,146	5.93%
	October	86,121	116,382	138,296	160,235	156,718	-2.19%
	November	113,195	138,293	163,068	194,646	191,549	-1.59%
	December	124,058	161,292	214,665	253,083	229,269	-9.41%
	Total	1,055,202	1,421,615	1,700,041	2,015,128	2,125,465	5.48%



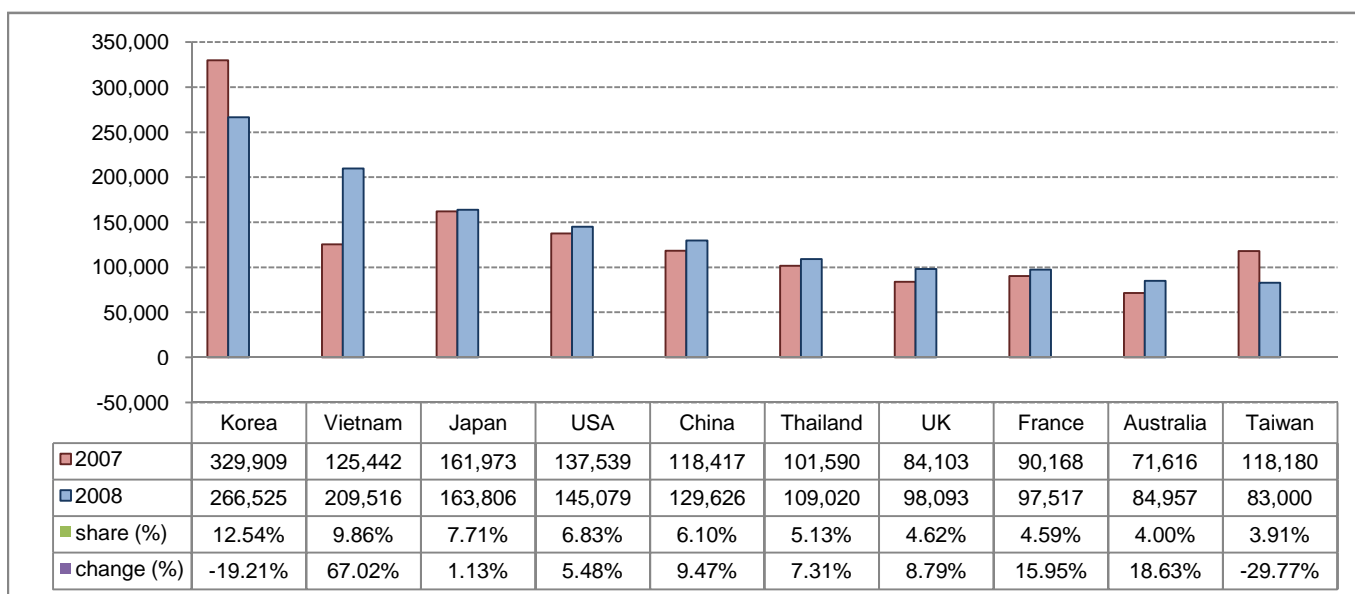
Executive Summary from January - December in 2008

I. Visitor arrivals to Cambodia from Jan - Dec was: **2,125,465**

II Mode of arrivals

	visitors	share (%)
- Air	1,239,407	58.31
Phnom Penh Int'l Airport	570,903	26.86
Siem Reap Int'l Airport	668,504	31.45
- Land and Water ways	762,027	35.85
Land	690,138	32.47
Boat	71,889	3.38
- Same-day visitors	124,031	5.84
Total	2,125,465	100.00

III. Top ten markets arrivals to Cambodia from Jan - Dec in 2008



IV. Visitor arrivals to Cambodia from Jan - Dec 2007 - 2008

Visitor arrivals			share (%)		change (%)
	2007	2008	2007	2008*	2008*/07
Air	1,296,513	1,239,407	64.34	58.31	-4.40
Phnom Penh Int'l Airport	535,262	570,903	26.56	26.86	6.66
Siem Reap Int'l Airport	761,251	668,504	37.78	31.45	-12.18
Land and Water ways	576,054	762,027	28.59	35.85	32.28
Land	532,366	690,138	26.42	32.47	29.64
Boat	43,688	71,889	2.17	3.38	64.55
Sub-Total	1,872,567	2,001,434	92.93	94.16	6.88
Same-day visitors	142,561	124,031	7.07	5.84	-13.00
Total	2,015,128	2,125,465	100.00	100.00	5.48

V. Remark: Percentage share of visitor arrivals at destination from Jan - Dec 2008

Visitor arrivals			share (%)		change (%)
	2007	2008	2007	2008*	2008*/07
Phnom Penh & Other Destinations	894,542	1,065,595	44.39%	50.13%	19.12%
Siem Reap Province	1,120,586	1,059,870	55.61%	49.87%	-5.42%
Total	2,015,128	2,125,465	100.00%	100.00%	5.48%

Visitor arrivals to Cambodia by purpose of visit in 2008

(by all means of transportation)

Regions Country of Residence	2007	2008			Total	females	share	change
		purpose of visit					(%)	(%)
		holiday	business	others			2008*	2008*/07
GRAND TOTAL	2,015,128	1,808,303	158,776	34,355	2,125,465	926,763	100.00%	5.48%
Asia and the Pacific	1,256,021	1,176,714	132,385	18,571	1,327,670	599,997	62.46%	5.70%
ASEAN	410,132	481,874	61,040	9,547	552,461	259,610	25.99%	34.70%
Brunei Darussalam	340	248	14	94	356	139	0.02%	4.71%
Indonesia	8,543	5,513	3,335	350	9,198	3,594	0.43%	7.67%
Laos	23,060	60,413	122	398	60,933	41,722	2.87%	164.24%
Malaysia	84,039	75,624	4,844	270	80,738	31,235	3.80%	-3.93%
Myanmar	1,781	1,843	476	142	2,461	879	0.12%	38.18%
Philippines	29,534	33,392	4,858	1,044	39,294	23,577	1.85%	33.05%
Singapore	35,803	38,917	1,850	178	40,945	14,621	1.93%	14.36%
Thailand	101,590	92,208	14,413	2,399	109,020	39,480	5.13%	7.31%
Vietnam	125,442	173,716	31,128	4,672	209,516	104,363	9.86%	67.02%
Eastern Asia	731,392	579,345	61,500	5,587	646,432	292,068	30.41%	-11.62%
China	118,417	95,270	33,044	1,312	129,626	53,299	6.10%	9.47%
Hong Kong, China	2,731	2,715	603	2	3,320	1,146	0.16%	21.57%
Japan	161,973	156,434	4,831	2,541	163,806	77,567	7.71%	1.13%
Mongolia	182	130	8	17	155	64	0.01%	-14.84%
South Korea	329,909	249,845	15,069	1,611	266,525	123,521	12.54%	-19.21%
Taiwan, China	118,180	74,951	7,945	104	83,000	36,471	3.91%	-29.77%
Southern Asia	14,139	10,808	3,679	965	15,452	3,713	0.73%	9.29%
Afghanistan	33	22		18	40	9	0.00%	21.21%
Bangladesh	659	373	219	116	708	106	0.03%	7.44%
India	11,454	9,010	2,929	528	12,467	3,101	0.59%	8.84%
Nepal	730	633	195	101	929	221	0.04%	27.26%
Pakistan	563	360	104	113	577	69	0.03%	2.49%
Sri Lanka	700	410	232	89	731	207	0.03%	4.43%
Oceania	83,949	91,152	5,688	2,247	99,087	43,209	4.66%	18.03%
Australia	71,616	78,189	4,835	1,933	84,957	37,412	4.00%	18.63%
New Zealand	12,333	12,963	853	314	14,130	5,797	0.66%	14.57%
Others Asia & the Pacific	16,409	13,535	478	225	14,238	1,397	0.67%	-13.23%
Europe	410,643	431,286	16,625	9,560	457,471	181,168	21.52%	11.40%
Northern Europe	133,946	144,487	6,128	2,761	153,376	58,527	7.22%	14.51%
Denmark	8,477	8,855	275	241	9,371	3,627	0.44%	10.55%
Finland	5,640	6,421	207	205	6,833	2,346	0.32%	21.15%
Iceland	214	271	3		274	102	0.01%	28.04%
Ireland	10,260	10,780	282	193	11,255	4,761	0.53%	9.70%
Norway	6,631	7,507	247	121	7,875	2,957	0.37%	18.76%
Sweden	18,621	18,862	492	321	19,675	8,198	0.93%	5.66%
United Kingdom	84,103	91,791	4,622	1,680	98,093	36,536	4.62%	16.63%
Western Europe	196,641	201,355	8,482	5,390	215,227	88,181	10.13%	9.45%
Austria	6,795	7,127	90	59	7,276	3,009	0.34%	7.08%
Belgium	12,038	12,244	469	466	13,179	5,247	0.62%	9.48%
France	90,168	89,306	5,300	2,911	97,517	40,943	4.59%	8.15%
Germany	53,087	57,350	1,397	1,156	59,903	23,877	2.82%	12.84%
Luxembourg	489	457	8	21	486	187	0.02%	-0.61%
Netherlands	20,773	21,175	738	495	22,408	9,140	1.05%	7.87%
Switzerland	13,291	13,696	480	282	14,458	5,778	0.68%	8.78%
Eastern Europe	21,881	29,155	683	381	30,219	14,197	1.42%	38.11%
Bulgaria	1,605	301	11	10	322	141	0.02%	-79.94%
Czech	1,907	2,052	33	62	2,147	885	0.10%	12.59%
Hungary	2,246	2,104	56	33	2,193	987	0.10%	-2.36%
Poland	3,895	5,536	44	50	5,630	2,671	0.26%	44.54%
Romania	422	526	34	9	569	314	0.03%	34.83%
Russia	9,922	16,338	419	170	16,927	8,149	0.80%	70.60%
Slovakia	594	709	18	35	762	306	0.04%	28.28%
Ukraine	1,290	1,589	68	12	1,669	744	0.08%	29.38%
Southern Europe	41,995	43,043	906	846	44,795	19,002	2.11%	6.67%
Croatia	216	329	7	19	355	154	0.02%	64.35%
Greece	1,291	1,372	24	45	1,441	507	0.07%	11.62%
Italy	18,077	18,788	376	352	19,516	7,468	0.92%	7.96%
Portugal	2,542	2,177	65	42	2,284	1,043	0.11%	-10.15%
Slovenia	639	870	13	8	891	408	0.04%	39.44%
Spain	17,592	17,870	236	238	18,344	8,737	0.86%	4.27%
Turkey	1,638	1,637	185	142	1,964	685	0.09%	19.90%
Others Europe	16,180	13,246	426	182	13,854	1,261	0.65%	-14.38%

Visitor arrivals to Cambodia by purpose of visit in 2008

(by all means of transportation)

Regions Country of Residence	2007	2008			Total	females	share	change
		purpose of visit					(%)	(%)
		holiday	business	others			2008*	2008*/07
GRAND TOTAL	2,015,128	1,808,303	158,776	34,355	2,125,465	926,763	100.00%	5.48%
Americas	194,706	189,838	9,142	5,898	204,878	83,407	9.64%	5.22%
Argentina	1,162	1,559	28	58	1,645	751	0.08%	41.57%
Brazil	1,585	1,951	30	77	2,058	991	0.10%	29.84%
Canada	34,008	34,405	1,669	817	36,891	16,129	1.74%	8.48%
Chile	1,580	1,596	26	17	1,639	819	0.08%	3.73%
Colombia	690	733	9	43	785	355	0.04%	13.77%
Mexico	3,436	3,299	35	45	3,379	1,681	0.16%	-1.66%
Peru	336	356	5	27	388	201	0.02%	15.48%
United States	137,539	133,315	7,080	4,684	145,079	61,283	6.83%	5.48%
Uruguay	269	163	3	1	167	103	0.01%	-37.92%
Others Americas	14,101	12,461	257	129	12,847	1,094	0.60%	-8.89%
Africa	3,270	3,454	452	134	4,040	1,219	0.19%	23.55%
Cameroon	133	309	25	6	340	53	0.02%	155.64%
Ghana	154	107	17	8	132	22	0.01%	-14.29%
Nigeria	629	760	212	27	999	76	0.05%	58.82%
Sudan	6	24	7	7	38	7	0.00%	533.33%
South Africa	1,798	1,983	164	33	2,180	932	0.10%	21.25%
Others Africa	550	271	27	53	351	129	0.02%	-36.18%
Middle East	7,927	7,011	172	192	7,375	2,599	0.35%	-6.96%
Egypt	77	145	5	5	155	43	0.01%	101.30%
Iran	415	272	11	14	297	59	0.01%	-28.43%
Israel	6,453	5,870	133	128	6,131	2,386	0.29%	-4.99%
Kuwait	410	462	3	7	472	15	0.02%	15.12%
Palestine					0		0.00%	
Saudi Arabia	93	45	5	2	52	4	0.00%	-44.09%
United Arab Emirates					0		0.00%	
Others Middle East	479	217	15	36	268	92	0.01%	-44.05%
Same-day visitors	142,561				124,031	58,373	5.84%	-13.00%

COMPILED BY:

1. Mr. Kong Sopheareak

Director
Statistics & Tourism Information Department
Tel.: +855 23 211593
E-mail: kong@mot.gov.kh

2. Mr. Horth Vanny

Chief of Tourism Statistics Office
Compile and data analysis
Tel.: +855 12 827664